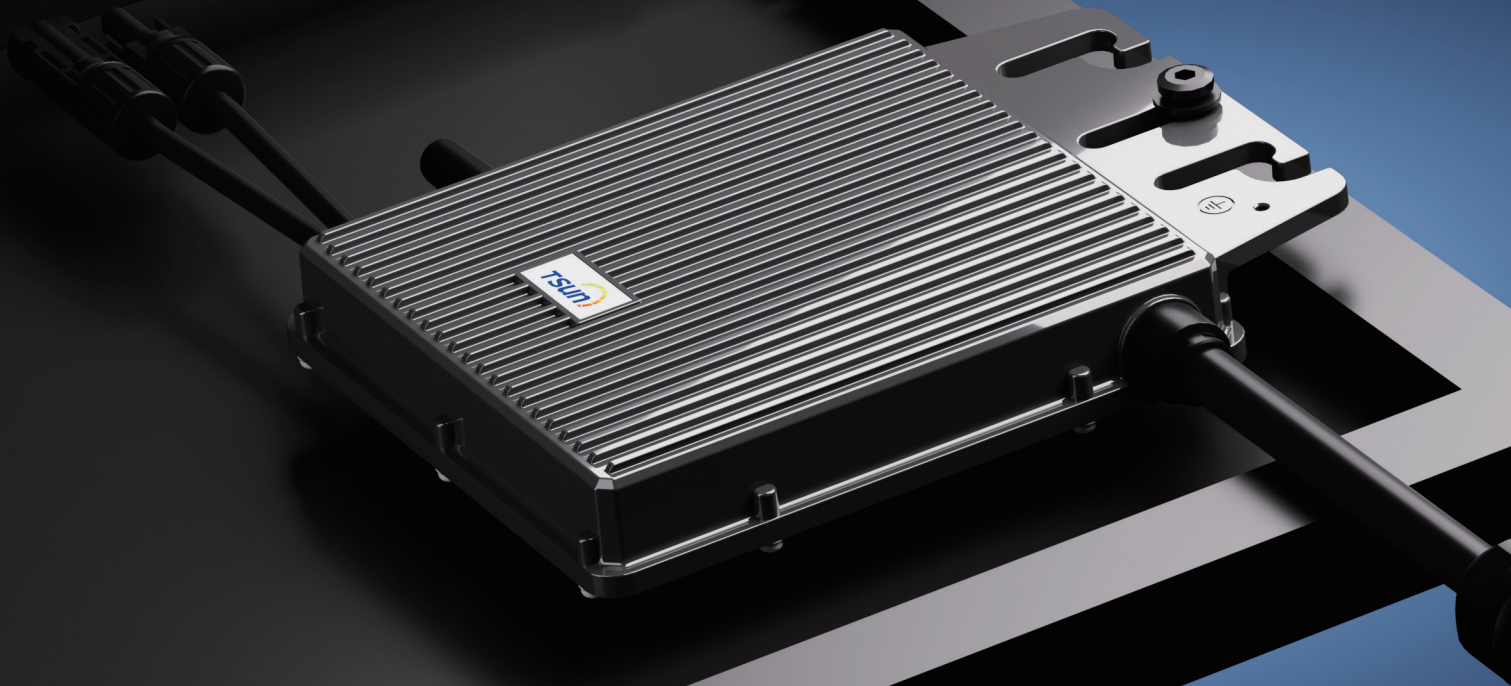


# TSUN Balcony Microinverter

TSOL-MS300 Balcony / TSOL-MS350 Balcony / TSOL-MS400 Balcony  
TSOL-MX400 Balcony / TSOL-MX450 Balcony / TSOL-MX500 Balcony



## Maximized Efficiency

Individual optimization, se-parate dedicated MPPT for each panel.

New topology design, max. efficiency up to 96.7%.

## Flexibility

Suitable for TSOL-ESK series AC module solution.

Plug & play installation, Easy to install.

## Safety

Max. DC voltage 60V. No threat for high DC voltage.

Integrated LoM protection function. Ensure the safety of power grid.

## Reliability

Die casting design and glue filling technology. Better thermal dissipation.

Standard 12 years warranty, Quality guaranteed.

CE VDE 4105 EN 50549

TSUNESS Co., Ltd

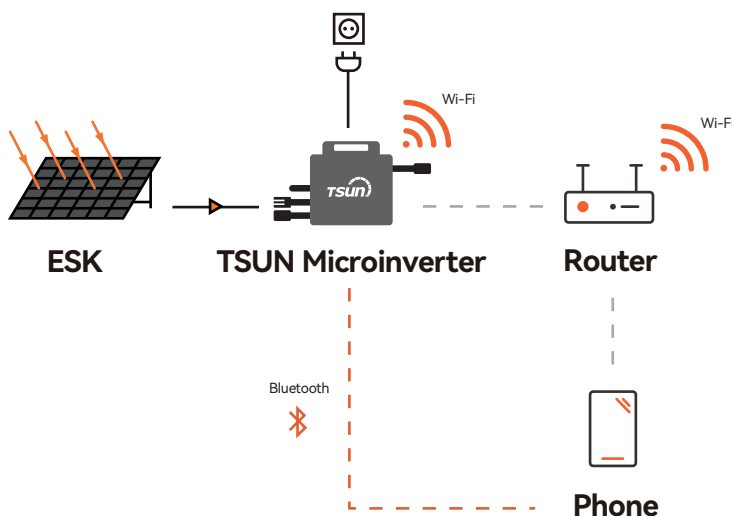
sales@tsun-ess.com www.tsun-ess.com +86-512-66186028

# Technical Data

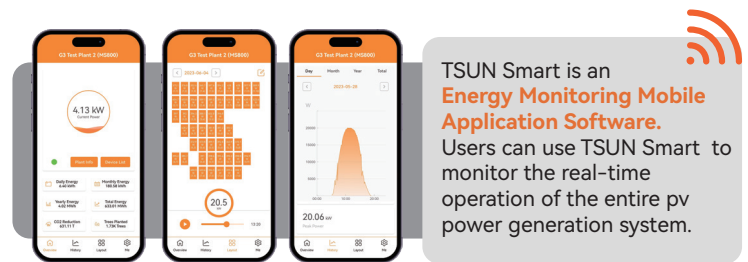
Model	TSOL-MS300 Balcony	TSOL-MS350 Balcony	TSOL-MS400 Balcony	TSOL-MX400 Balcony	TSOL-MX450 Balcony	TSOL-MX500 Balcony
<b>Input(DC)</b>						
Recommended Module Power [W]	300-550+	300-550+	300-550+	300-600+	300-600+	300-600+
Start up Voltage [V]				22		
MPPT Voltage Range [V]				16-60		
Max. Input Voltage [V]				60		
Max. Input Current [A]				14		
Max. Input Short-circuit Current[A]				20		
<b>Output [AC]</b>						
Max. Continuous Output Power [VA] <sup>1)</sup>	300	350	400	400	450	500
Max. Output Current [A]	1.45	1.59	2	2	2.25	2.5
Nominal Output Voltage [V] <sup>2)</sup>				230, L/N/PE		
Nominal Frequency [Hz] <sup>2)</sup>				50		
Power Factor				>0.99 default		
<b>Efficiency</b>						
Peak Inverter Efficiency				96.7%		
Nominal MPPT Efficiency				99.9%		
Night Time Power Consumption [mW]				< 50		
<b>General Data</b>						
Dimensions [WxHxD mm]				178 * 153 * 28		
Weight [kg]				1.5		
Operating Ambient Temperature Range [°C] <sup>3)</sup>				-40 °C to 65°C		
Cooling				Natural Convection		
Type of isolation				Galvanically Isolated HF Transformer		
Type of Enclosure				IP67		
DC Connector Type				QC4 (Stäubli MC4 Optional)		
Compliance	CE-RED, EN 50549-1: 2019, VDE-AR-N 4105: 2018, CEI 0-21: 2022, TOR, Synergrid					
<b>Power Cord (Optional)</b>						
Wire Size				1.5mm <sup>2</sup>		
Cable Length <sup>4)</sup>				5m / 10m / 20m		
Plug Type <sup>4)</sup>				Schuko		
<b>Monitoring</b>						
Communication				Built-in WiFi module		
Energy Management				Talent Home App / TSUN Smart App		

- 1) The output power of microinverter can be limited to 300W / 600W according to the local regulations.
- 2) The AC voltage and frequency range may vary depending on specific country grid.
- 3) The microinverter may derate under poor ventilation and heat dissipation installation environment.
- 4) The length and plug type can be customized.

## Diagram



## Monitoring Platform



TSUN Smart is an **Energy Monitoring Mobile Application Software**. Users can use TSUN Smart to monitor the real-time operation of the entire pv power generation system.

Monitor Generation Data of Solar Plant

One-button to Connect Network

Power Generation Statistics

Module-level Monitoring System

Fast Network Configuration