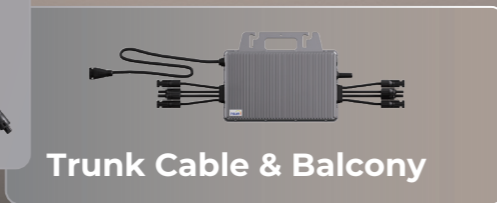
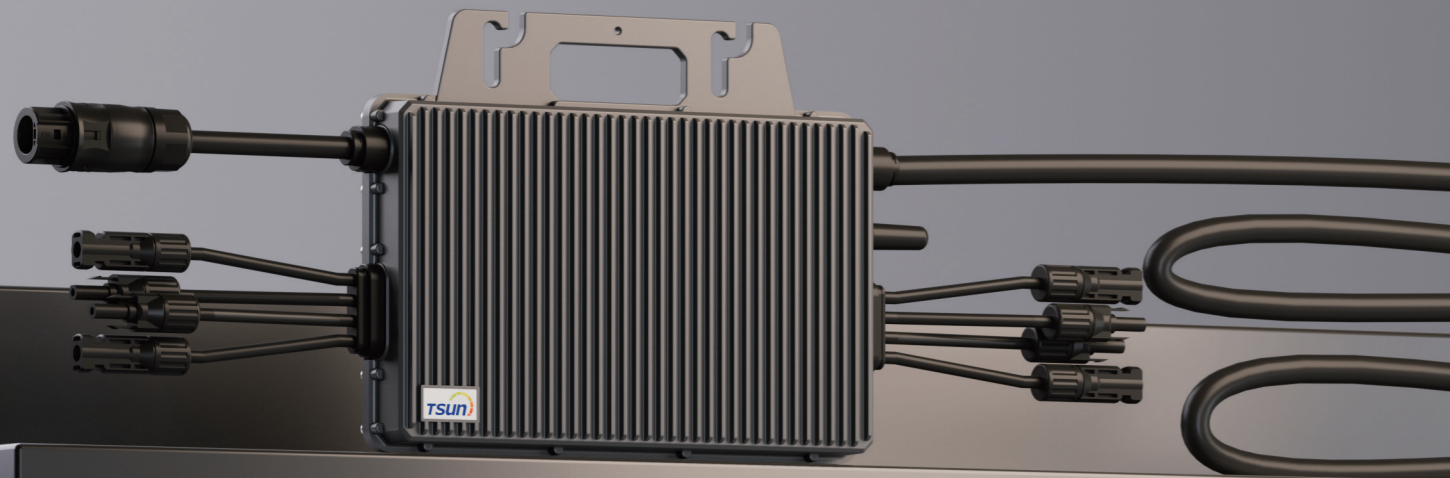


TSUN GEN3 Plus Microinverter

TSOL-MS1600/MS1800/MS2000/MX2250



Maximized Efficiency

Individual optimization, separate dedicated MPPT for each panel.

New topology design, max. efficiency up to 97.0%.

Flexibility

Plug & play installation, Easy to install.

Safety

Max. DC voltage 60V. No threat for high DC voltage.

Integrated LoM protection function. Ensure the safety of power grid.

Reliability

Die casting design and glue filling technology. Better thermal dissipation.

Standard 12 years warranty, Quality guaranteed.

CE VDE 0126 VDE 4105 EN 50549 INMETRO RD 1699 G 98

TSUNESS Co., Ltd

sales@tsun-ess.com www.tsun-ess.com +86-512-66186028

Technical Data (Daisy Chain)

Model	MS1600	MS1800	MS2000	MX2250
Input(DC)				
Recommended Module Power (Wp)	300 ~ 600+	300 ~ 600+	300 ~ 600+	400 ~ 700+
Quantity of PV Module	1 to 4	1 to 4	1 to 4	1 to 4
Start up Voltage per Input@Rated condition (V)	22	22	22	22
MPPT Voltage Range per Input (V)	16 ~ 60	16 ~ 60	16 ~ 60	16 ~ 60
Max. Input Voltage per Input (V)	60	60	60	60
Short-current(A)	25	25	25	25
Max. Input Current per Input (A)	16	16	16	18
Quantity of MPPT	4	4	4	4
Quantity of DC Inputs	4	4	4	4
Output [AC]				
Nominal Continuous Output Power (W)	1600	1800	2000	2250
Max Output Current [A]	8	9	10	11.25
Nominal Output Voltage [V]	220/230/240, L/N/PE			
Nominal Frequency [Hz]	50/60			
Power Factor	>0.99 default, 0.8 leading ... 0.8 lagging			
Output Current Harmonic Distortion	<3%			
Maximum units per 12AWG branch	4	4	3	3
Maximum units per 10AWG branch	6	5	5	4
Efficiency				
Peak Inverter Efficiency	96.7%	96.7%	96.7%	97.0%
EU Efficiency	96.5%	96.5%	96.5%	96.7%
Nominal MPPT Efficiency	99.9%			
Night Time Power Consumption	<50 mW			
Mechanical Data				
Dimensions [WxHxD mm]	331 * 261 * 44			
Weight [kg]	5.5			
General Data				
Communication	WiFi (Bluetooth) or RS485			
Cable/Assembling	AC Cable up to 2.52m			
Type of Isolation	HF Isolation			
Type of Enclosure	IP67			
Cooling	Natural convection			
Operating Ambient Temperature Range	-40 ~ +65 °C (derating of over 50°C Ambient Temperature@ PV input 30V)			
Relative Humidity	100%			
Max. Operating Altitude Without Derating [m]	2000			

※The AC voltage , frequency range and plug type may vary depending on specific country grid.

Wiring Diagram (Daisy-chain)



Maximum units per AC branch

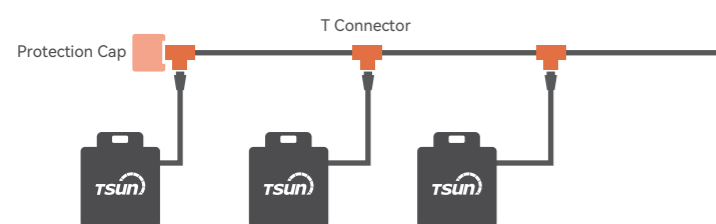
MODEL	12AWG	10AWG
MS1600	4	6
MS1800	4	5
MS2000	3	5
MX2250	3	4

Technical Data (Trunk Cable)

Model	MS1600	MS1800	MS2000	MX2250
Input(DC)				
Recommended Module Power (Wp)	300 ~ 600+	300 ~ 600+	300 ~ 600+	400 ~ 700+
Quantity of PV Module	1 to 4	1 to 4	1 to 4	1 to 4
Start up Voltage per Input@Rated condition (V)	22	22	22	22
MPPT Voltage Range per Input (V)	16 ~ 60	16 ~ 60	16 ~ 60	16 ~ 60
Max. Input Voltage per Input (V)	60	60	60	60
Short-current(A)	25	25	25	25
Max. Input Current per Input (A)	16	16	16	18
Quantity of MPPT	4	4	4	4
Quantity of DC Inputs	4	4	4	4
Output [AC]				
Nominal Continuous Output Power (W)	1600	1800	2000	2250
Max Output Current [A]	8	9	10	11.25
Nominal Output Voltage [V]	220/230/240, L/N/PE			
Nominal Frequency [Hz]	50/60			
Power Factor	>0.99 default, 0.8 leading ... 0.8 lagging			
Output Current Harmonic Distortion	<3%			
Maximum units per 10AWG branch	6	5	5	4
Efficiency				
Peak Inverter Efficiency	96.7%	96.7%	96.7%	97.0%
EU Efficiency	96.5%	96.5%	96.5%	96.7%
Nominal MPPT Efficiency	99.9%			
Night Time Power Consumption	<50 mW			
Mechanical Data				
Dimensions [WxHxD mm]	331 * 261 * 44			
Weight [kg]	5			
General Data				
Communication	WiFi (Bluetooth) or RS485			
Cable/Assembling	AC Cable up to 0.5m with T connector			
Type of Isolation	HF Isolation			
Type of Enclosure	IP67			
Cooling	Natural convection			
Operating Ambient Temperature Range	-40 ~ +65 °C (derating of over 50°C Ambient Temperature@ PV input 30V)			
Relative Humidity	100%			
Max. Operating Altitude Without Derating [m]	2000			

※The AC voltage , frequency range and plug type may vary depending on specific country grid.

Wiring Diagram (Trunk cable)



Maximum units per AC branch

MODEL	10AWG
MS1600	6
MS1800	5
MS2000	5
MX2250	4

Technical Data (Balcony)

Model	MS2000(800)	MS1600	MS1800	MS2000	MX2250
Input(DC)					
Recommended Module Power (Wp)	300 ~ 600+	300 ~ 600+	300 ~ 600+	300 ~ 600+	400 ~ 700+
Quantity of PV Module	1 to 4	1 to 4	1 to 4	1 to 4	1 to 4
Start up Voltage per Input@Rated condition (V)	22	22	22	22	22
MPPT Voltage Range per Input (V)	16 ~ 60	16 ~ 60	16 ~ 60	16 ~ 60	16 ~ 60
Max. Input Voltage per Input (V)	60	60	60	60	60
Short-current(A)	25	25	25	25	25
Max. Input Current per Input (A)	18	18	18	18	18
Quantity of MPPT	4	4	4	4	4
Quantity of DC Inputs	4	4	4	4	4
Output [AC]					
Nominal Continuous Output Power (W)	800	1600	1800	2000	2250
Max Output Current [A]	4	8	9	10	11.5
Nominal Output Voltage [V]	220/230/240, L/N/PE				
Nominal Frequency [Hz]	50/60				
Power Factor	>0.99 default, 0.8 leading ... 0.8 lagging				
Output Current Harmonic Distortion	<3%				
Efficiency					
Peak Inverter Efficiency	96.7%	96.7%	96.7%	96.7%	97.0%
EU Efficiency	96.5%	96.5%	96.5%	96.5%	96.7%
Nominal MPPT Efficiency	99.9%				
Night Time Power Consumption	<50 mW				
Mechanical Data					
Dimensions [WxHxD mm]	331 * 261 * 44				
Weight [kg]	5				
General Data					
Communication	WiFi (Bluetooth)				
Cable/Assembling	AC Cable up to 0.5m				
Type of Isolation	HF Isolation				
Type of Enclosure	IP67				
Cooling	Natural convection				
Operating Ambient Temperature Range	-40 ~ +65 °C (derating of over 50°C Ambient Temperature@ PV input 30V)				
Relative Humidity	100%				
Max. Operating Altitude Without Derating [m]	2000				

※The AC voltage , frequency range and plug type may vary depending on specific country grid.

Wiring Diagram(Balcony)

